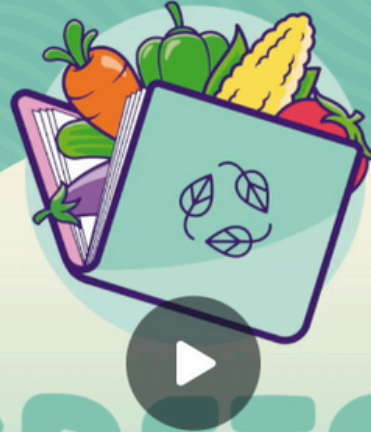




Regenerative Sustainable Food Chains
Through Market Gardening

NOVEMBER 2024

NEWSLETTER



AGRETAIN

Regenerative Sustainable Food Chains
Through Market Gardening

TRAINING FOR REGENERATIVE, SUSTAINABLE MARKET GARDENING



READ MORE

Training in market gardening is still absent in the majority of EU countries since this model requires a combination of skills and competences that HEIs/ VET centers/ Schools haven't included yet in their curricula and trainings, demanding multidisciplinary, managerial, and cross-sectoral expertise.

READ MORE



AGRETAIN aims to develop and deliver an innovative approach for teaching market gardening, by creating tailored and engaging learning resources that cater to the needs of students, neo-farmers, and experienced farming practitioners. The project emphasizes hands-on training and knowledge transfer through a blend of theoretical content and practical applications.

LASTING IMPACT WITH NEED-BASED APPROACHES

MAPPING TRAINING NEEDS FOR A SUSTAINABLE MARKET GARDENING FUTURE

The AGRETAIN consortium is currently finalising an in-depth analysis of training needs and learning outcomes to shape a market gardening curriculum grounded in sustainability and agroecology. This work assessed the agricultural education landscape, referencing ESCO, EntreComp, GreenComp, and DigiComp frameworks, and identified present and future needs across the five participating countries in alignment with the SDGs.

PROJECT MEETING IN KALAMATA, GREECE

On October 22-23, the AGRETAIN project team gathered for our second in-person meeting in Kalamata, Greece hosted by the University of the Peloponnese. The vibrant setting provided the perfect backdrop for strategic planning, engaging discussions, and collaborative efforts to advance our mission.

COMPREHENSIVE ANALYSIS TO SHAPE AN INCLUSIVE AND IMPACTFUL CURRICULUM

The AGRETAIN curriculum will support the delivery of market training content through a mix of pedagogical approaches, including blended learning, transformative learning, design thinking, and problem-based learning. It will also incorporate process-oriented and active learning methodologies, collaborative group learning techniques, and the integration of gamification tools to foster engagement and knowledge retention.

Anchored in microlearning principles, the curriculum will be aligned with the European Qualifications Framework (EQF) Level 5 and above ensuring that learners acquire relevant and practical skills.





EXCLUSIVE HIGHLIGHTS FROM OUR PARTNERS

➤➤➤ MARKET GARDENING AT GRAND FARM: GRAND GARTEN

GrandFarm in Austria operates a one-hectare market garden, cultivating 40-50 crops and delivering 150 vegetable boxes weekly, with plans to expand. Using organic, zero-pesticide methods and efficient bed designs, its dedicated team manages intensive operations. As a research and demonstration farm, it engages the community with weekly updates and shares insights on market gardening, aiming to improve and promote sustainable practices.



➤➤➤ SLÍ EILE: A COMMUNITY COMMITTED TO MENTAL HEALTH

Slí Eile, based in Ireland, is a vibrant and diverse community dedicated to supporting individuals in overcoming mental health challenges to lead fulfilling lives. This community comprises former and current participants in the recovery program, committed staff members, board directors, volunteers, donors offering financial support, and loyal customers of Slí Eile's social enterprises. It also includes collaborators from related services, activists, academic researchers seeking to learn from their model, and supportive well-wishers from both the local and wider community.



JOIN AGRETAIN ON:

